

# MODULE 8 L01

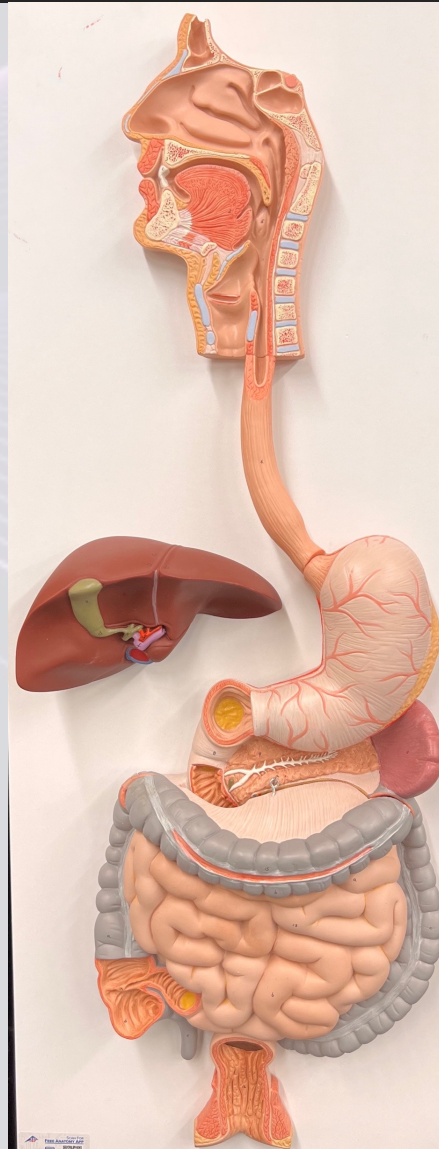
## Digestive Tract vs Accessory Organs

Dr. Lisa Brinn  
[lbrinn@fiu.edu](mailto:lbrinn@fiu.edu)



# 1) Digestive Tract and Accessory Organs

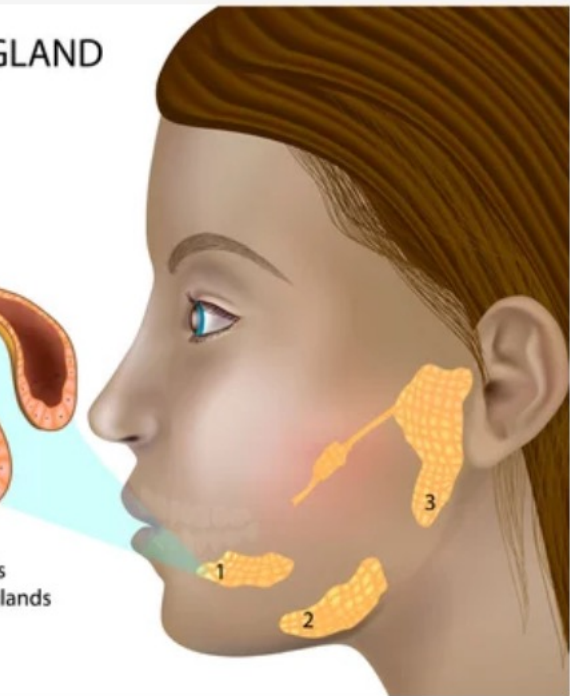
- Digestive tract:
  - ❖ Oral cavity
  - ❖ Pharynx
  - ❖ Esophagus
  - ❖ Stomach
  - ❖ Small intestine
  - ❖ Large intestine
- Accessory organs:
  - ❖ Teeth
  - ❖ Tongue
  - ❖ Salivary glands
  - ❖ Liver
  - ❖ Gallbladder
  - ❖ Pancreas



SALIVARY GLAND



- 1 Sublingual glands  
2 Submandibular glands  
3 Parotid glands



# Functions

- Ingestion
- Mechanical processing
- Digestion
- Secretion
- Absorption
- Excretion
- Compaction
- Defecation

